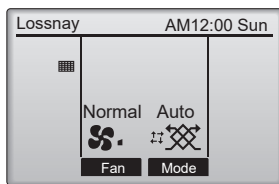



## Filter information



When this sign  appears, clean or replace the filters.

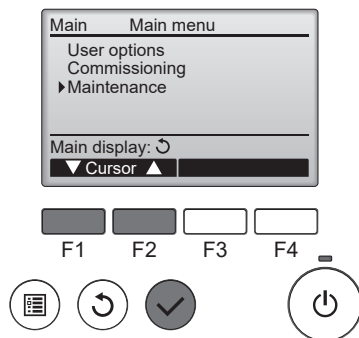
See section 6 about the cleaning the filters.


**Note**

The sign is displayed after the specified fan operation time.

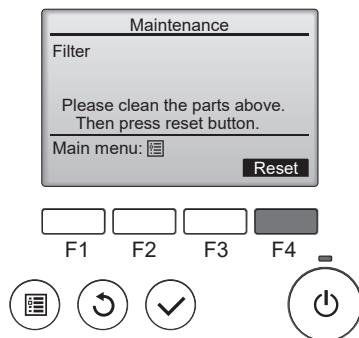
### Button operation

1



Select [Maintenance] from «Main menu» screen, and press the  button.

2



Press the **[F4]** button to reset cleaning sign.  
See section 6 to clean the filters.

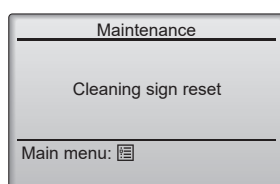
When using optional filters, clean or replace them following the their instructions.

3



Press the **[F4]** button to select [OK].

4



A confirmation screen will appear.