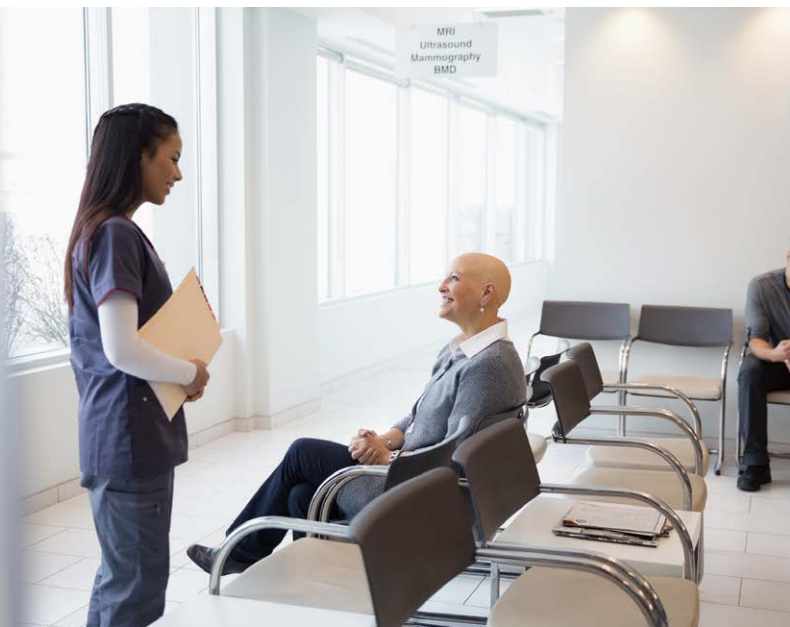


HAND DRYER

Jet Towel™



New 9th generation dual-nozzle flagship model
Jet Towel Slim

With heater
JT-SB216JSH2
White / Silver / Gray

w/o heater
JT-SB216KSN2
White



Compact but powerful, with a protective metal cover
Jet Towel Smart

With heater
JT-S2AP
White / Silver

A heater-less version of the Jet Towel Smart, with a highly durable plastic cover
Jet Towel Smart Lite

w/o heater
JT-S2A
White



Solutions from Mitsubishi Electric for Hand Hygiene

Why Choose Hand Dryer?

Hand washing is important. However, thorough hand drying after washing is just as important because some bacteria remain on hands after washing, and these bacteria are more easily spread on wet hands than dry ones. Hand dryers with automatic and touch-less technology are one of the most hygienic methods of drying hands.

Why Choose Mitsubishi Electric Jet Towel?

Mitsubishi Electric key technologies to keep the units always hygienic and clean!

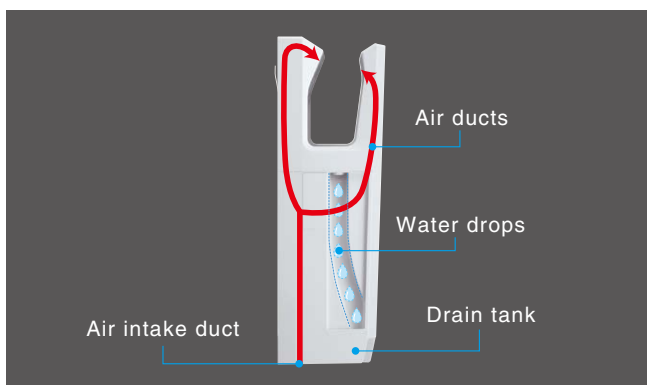
Certified by NSF International

NSF International, an independent third-party public safety health and standards organization, has certified Jet Towels to be compliant to its rigorous requirements (NSF/ANSI 169)



Separated Air Intake

In all models, the air intake is located separately from the output nozzles to reduce the risk of water intake.



Antibacterial Plastics

The plastics used in Jet Towels curb the growth of bacteria on the surface. The secret is the metal ions added into the resin, which work to inhibit the function of bacteria and reproductive growth.

Comparative Proof of Antibacterial Effect

Following 24hr culturing using a film contact method in Mitsubishi Electric laboratories.



Bacteria accumulation

Silver ions attach to the cell walls of general cellular bacteria, curbing protein synthesis and reaction to control bacterial growth and reproduction.



w/o antibacterial treatment



w/ antibacterial treatment

Drain Tank Keeps Floors Dry

Water blown from hands is caught and channeled into a convenient drain tank for easy removal.

It stores up to 800 uses*, and requires only periodic emptying and quick rinsing. *Jet Towel Slim type



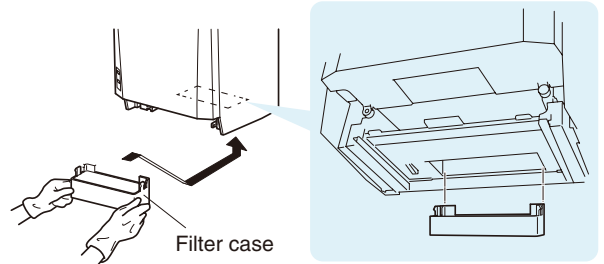
A small window indicates the level of water collected.



Optional Antibacterial Filter

Antibacterial filter increases dust and bacteria filtration and makes the Jet Towel even more hygienic without degrading the initial drying performance. No special tools are required to install/replace the filters unlike other brands.

JP-FS1-E
(For JT-SB216JSH2/KSN2)



MITSUBISHI ELECTRIC CORPORATION

HEAD OFFICE: TOKYO BLDG., 2-7-3, MARUNOUCHI, CHIYODA-KU, TOKYO 100-8310, JAPAN
www.MitsubishiElectric.com