

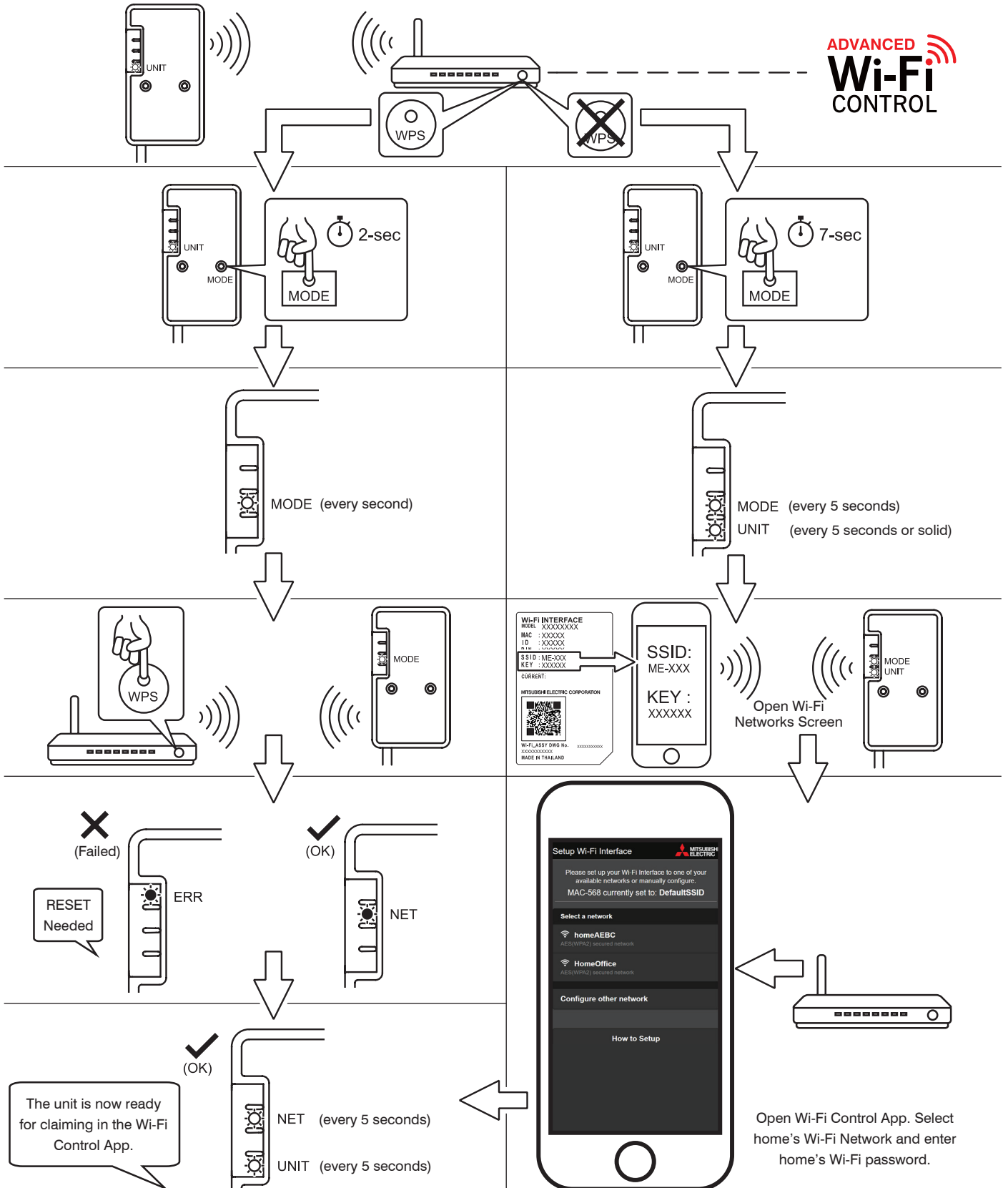
Wi-Fi Interface Setup Quick Reference Guide



Set up

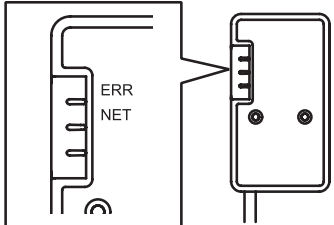
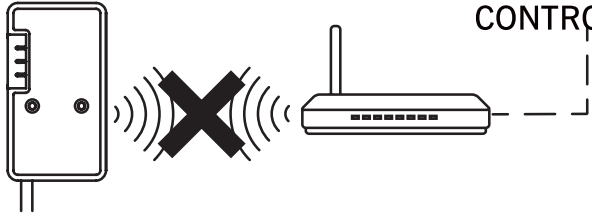
☀ ON ⚙ Flashing

ADVANCED
Wi-Fi
CONTROL

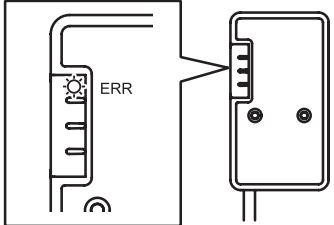



MAC-568IF-E Troubleshooting

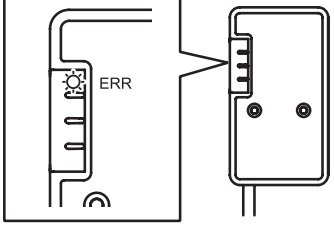
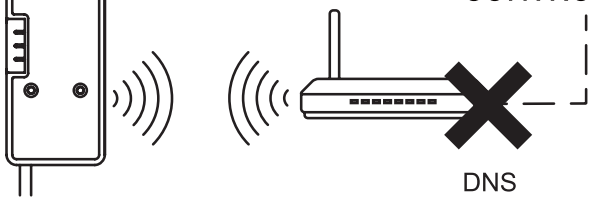
Your Wi-Fi Interface is not connected to any router

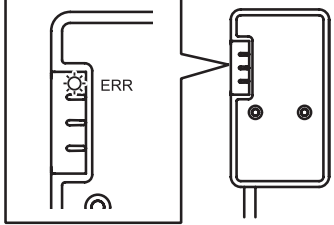
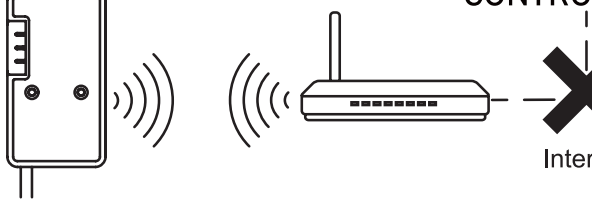
<p>ERR: OFF NET: OFF</p> 	 <p>ADVANCED Wi-Fi CONTROL</p>	<p>Try pairing the Wi-Fi Interface with the router. Please start setup again.</p>
--	---	---

Your Wi-Fi Interface is not communicating to your router

<p>ERR: Flash (Every 0.5-sec)</p> 	 <p>ADVANCED Wi-Fi CONTROL</p> <p>IP Address</p>	<p>Check DHCP settings of the router. or Check IP address settings of the Wi-Fi Interface.</p>
---	---	--

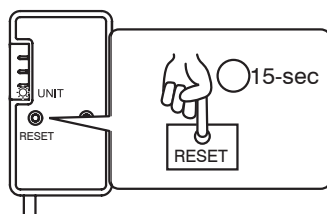
Your router is not communicating to the internet

<p>ERR: Flash (Every 1 sec)</p> 	 <p>ADVANCED Wi-Fi CONTROL</p> <p>DNS</p>	<p>Check DNS settings of the router. or Check DNS address settings of the Wi-Fi Interface.</p>
---	--	--

<p>ERR: Flash (Twice every 5 sec)</p> 	 <p>ADVANCED Wi-Fi CONTROL</p> <p>Internet</p>	<p>Check if the router is connected to the internet.</p>
---	---	--

To Reset

If you have any issues and need to start setup again, hold down the **RESET** button for 15 seconds.



For more information on how to setup the Wi-Fi Interface, please see the Installation Guide that came with your Wi-Fi Interface and is available to download from the Wi-Fi Control App under 'Support', or follow the 'How to Setup' instructions from the Wi-Fi Control App under 'Support'.